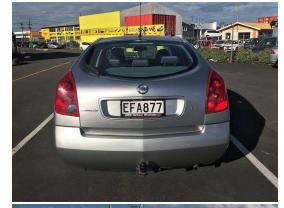


# 2007 Nissan Primera 2.0P SX Hatch



## VEHICLE INFORMATION

### Cash Price

Includes GST,  
Registration &  
Licensing

**\$5,499**

Finance this vehicle  
from only

**\$36.13**

per week\*

Total Amount Payable

**\$7,515.48**

finance  
**NOW** Money your way



Gain peace of mind  
with Mechanical  
Breakdown Insurance.  
Ask us how.

### Body

Hatchback

### Odometer

116,613 km

### Engine

1998 cc

### Fuel Type

Petrol

### Transmission

Automatic

### Wheels

-

### VIN

SJNFCAP12A2313146

### Reg No.

EFA877

### Ext Colour

Silver

### History

NZ New, 4 owners

### Seats

5 seats

### Interior

-

### Audio

-

### Stock ID

1804

### Exterior Features

### Interior Features

### Mechanical Features



Harbour Wholesale, Phone 09 444 1360, Email sales@harbourwholesale.co.nz  
118c Sunnybrae Road, Glenfield, Auckland 0627, New Zealand  
www.harbourwholesale.co.nz

\* Finance calculation based on a 48 month term, no deposit and with an example annual fixed interest rate of 10.95%. Actual interest rate may be higher or lower. Includes an establishment fee of \$495.00 and a monthly maintenance fee of \$1.80. Full term total amount payable of \$7,515.48. Estimate only, not an offer of finance. Terms, conditions and lending criteria apply.